

OUR PIPELINE

We are advancing a diversified portfolio of product candidates with transformative **potential to address cancer care across indications with high incidence** as well as for the **potential prevention or treatment of infectious diseases**.

Oncology^{1,2}

Phase 1	Phase 1/2	Phase 2	Phase 2/3	Phase 3
BNT116 Adv. NSCLC	BNT324/ DB-1311 ⁵ Multiple solid tumors	Pumitami ³ + BNT3213 1L HCC ^{4,11}	Autogene cevumeran ⁶ Adj. CRC	Pumitami ³ 2L ES-SCLC ¹¹
BNT211 Multiple solid tumors	BNT325/ DB-1305 ⁵ Multiple solid tumors	Pumitami ³ + BNT324/ DB-1311 ⁵ Adv./met. NSCLC and SCLC ⁴	Autogene cevumeran ⁶ Adj. PDAC	Pumitami ³ 2L + EGFRm NSCLC ¹¹
BNT314/ GEN1059 ⁹ Multiple solid tumors	BNT329 Multiple solid tumors	Pumitami ³ + BNT325/ DB-1305 ⁵ Multiple solid tumors ⁴	BNT116 ¹⁰ 1L adv. NSCLC	Pumitami ³ 2L Glioblastoma ¹¹
BNT317 Multiple solid tumors	Gotistobart ⁷ Met. CRPC	Pumitami ³ + BNT326/ YL202 ⁸ Multiple solid tumors	BNT326/ YL202 ⁸ Multiple solid tumors ¹¹	Pumitami ³ 1L HCC ¹¹
BNT326/ YL202 ⁸ Multiple solid tumors	Gotistobart ⁷ Multiple solid tumors	Pumitami ³ + BNT326/ YL202 ⁸ Adv. NSCLC	BNT326/ YL202 ⁸ Adv./met. BC. ¹¹	Pumitami ³ 1L MPM ¹¹
	Pumitami ³ Multiple solid tumors	Pumitami ³ + Trastuzumab pamirtecan ⁵ Adv./met. BC ⁴	Gotistobart ⁷ PROC	Pumitami ³ 2L NEN ¹¹
	Pumitami ³ 1L adv./met. TNBC ¹¹	Trastuzumab pamirtecan ⁵ Multiple solid tumors	Pumitami ³ 1L met. CRC ¹¹	Pumitami ³ 2L adv./met. NSCLC
	Pumitami ³ + BNT314/ GEN1059 ⁹ Met. CRC ⁴		Pumitami ³ 1L ES-SCLC ¹¹	Pumitami ³ 1L met. PDAC ¹¹
	Pumitami ³ + BNT3212 Multiple solid tumors		Pumitami ³ 1L/2L + ES-SCLC	Pumitami ³ 1L/2L adv./met. TNBC
				Pumitami ³ or BNT325/ DB-1305 ⁵ + BNT324/DB-1311 ⁵ Multiple solid tumors ⁴
				BNT113 1L HPV16+ HNSCC
				Gotistobart ⁷ Met. NSCLC
				Pumitami ³ 1L met. CRC
				Pumitami ³ 1L NSCLC
				Pumitami ³ 1L ES-SCLC
				Pumitami ³ 2L SCLC ¹¹
				Pumitami ³ 1L adv./met. TNBC ¹¹
				Trastuzumab pamirtecan ⁵ Met. BC
				Trastuzumab pamirtecan ⁵ 2L EC

Next generation immunomodulator

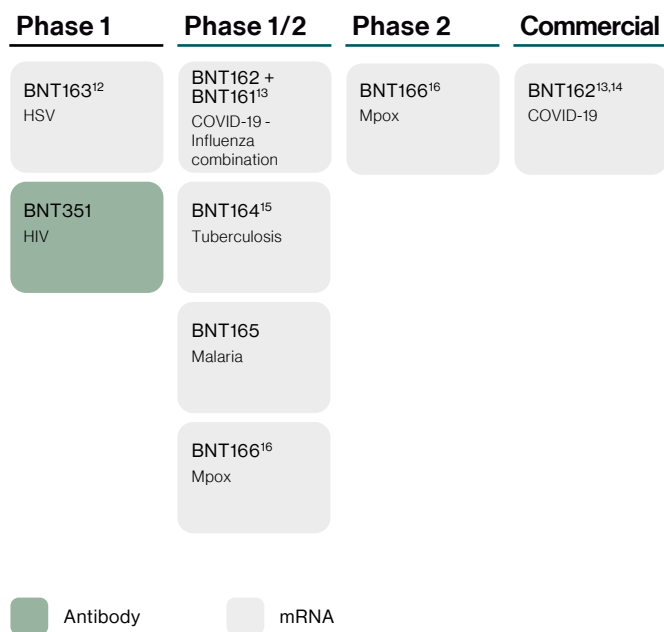
Targeted therapy

mRNA cancer immunotherapy

Novel-novel combination

BC = Breast cancer; CRC = Colorectal cancer; CRPC = Castration-resistant prostate cancer; EC = Endometrial cancer; EGFRm NSCLC = EGFR-mutant non-small cell lung cancer; ES-SCLC = Extensive-stage small cell lung cancer; HCC = Hepatocellular carcinoma; HNSCC = Head and neck squamous cell carcinoma; MPM = Malignant mesothelioma; NEN = Neuroendocrine neoplasm; NSCLC = Non-small cell lung cancer; PDAC = Pancreatic ductal adenocarcinoma; PROC = Platinum-resistant ovarian cancer; SCLC = Small cell lung cancer; TNBC = Triple negative breast cancer

Infectious Diseases¹



⁽¹⁾ For further details about BioNTech's rights, see elsewhere in this Annual Report.

⁽²⁾ Abbreviations for indications are defined below the overview.

⁽³⁾ Partnered with Bristol Myers Squibb.

⁽⁴⁾ Trial is currently being conducted by or on behalf of BioNTech. Bristol Myers Squibb holds co-exclusive rights to pumitamid.

⁽⁵⁾ Partnered with DualityBio.

⁽⁶⁾ Partnered with Genentech, a member of the Roche Group.

⁽⁷⁾ Partnered with OncoC4.

⁽⁸⁾ Partnered with MediLink Therapeutics.

⁽⁹⁾ Partnered with Genmab.

⁽¹⁰⁾ In collaboration with Regeneron.

⁽¹¹⁾ Trial ongoing in China only

⁽¹²⁾ Partnered with University of Pennsylvania.

⁽¹³⁾ Partnered with Pfizer.

⁽¹⁴⁾ Partnered with Fosun Pharma.

⁽¹⁵⁾ Funded by the Gates Foundation.

⁽¹⁶⁾ Funded by the Coalition for Epidemic Preparedness Innovations (CEPI).